

Rant Drum Road

Southern Catawba County

53.76 ACRES

\$395,000

- Southern Catawba County
- Huge Creek at Rear of Property
- Open and Wooded with Hardwoods at Rear of Tract
- Only 2 Miles from Four-lane Hwy. 16 Bypass
- Potential for Future Development or Private Estate
- MLS # 968452 Catawba MLS # 955594
- Seller is NC Licensed Realtor

Acreage For Sale

Please Call 704-809-2500 or 704-634-4444 for more details and questions.

info@hechtdevelopment.com

www.hechtdevelopment.com

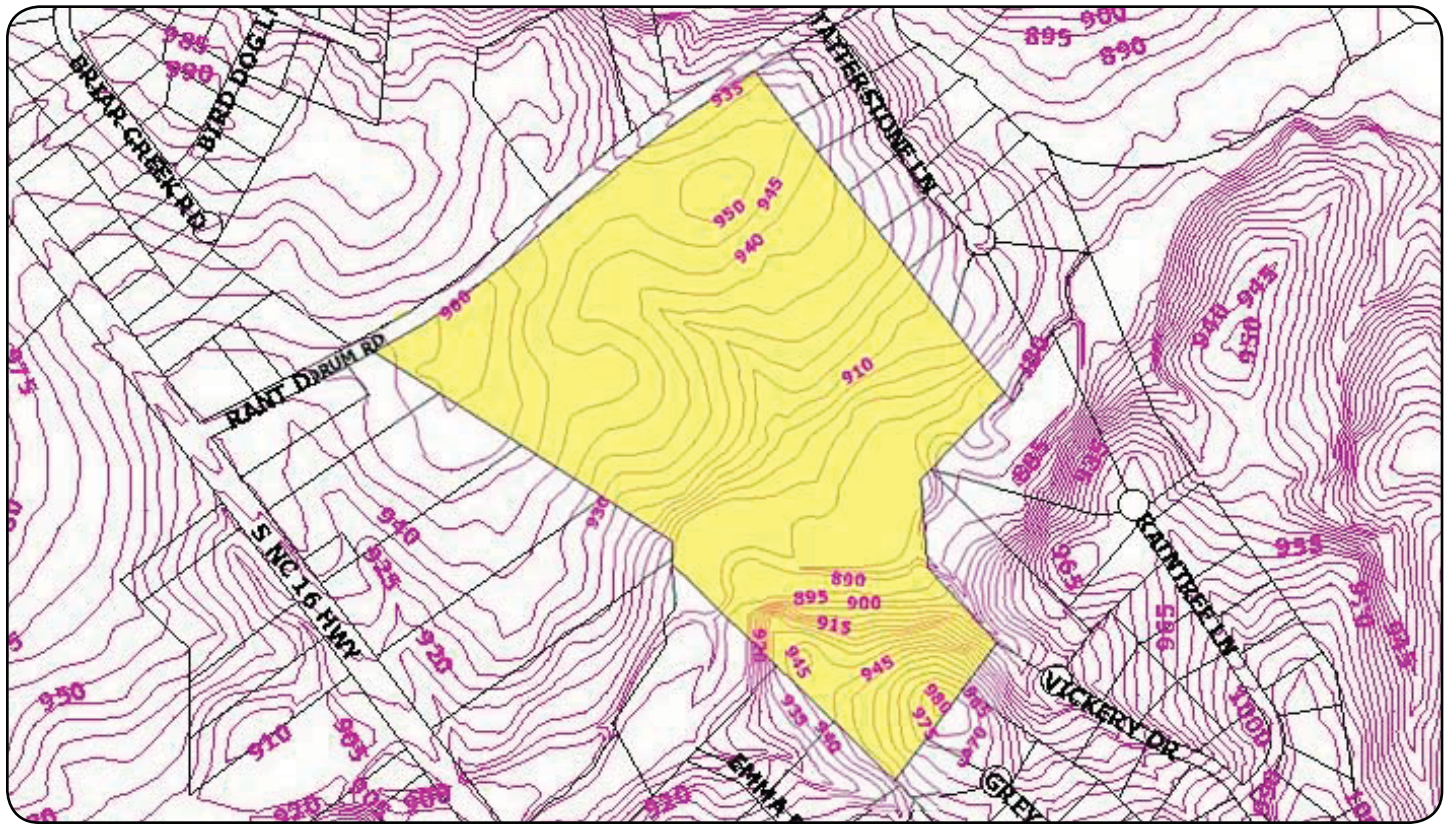
www.hechtdevelopmentblog.com

A HECHT Development Neighborhood

HECHT
Development



Aerial & Contour



Please visit our other HECHT Communities!

① Killian Crossing

New Homes from the \$300's - Lots from the \$30's
I-77, Exit 36, Hwy 150 West for 11.5 miles, left on
Grassy Creek, Killian Crossing on left.

② Kerns Meadow

Gated Entry - Prices from \$29,500
I-77, Exit 18, travel West on Vance Road,
left on Mt. Holly-Huntersville Road, first right on
Kerns Road to Kerns Meadow on left.

③ Autumn Woods

One Acre + Lots from \$49,000
From the corner of Hwy 16 & Hwy 73,
take Hwy 73 West for 3.5 miles, right on Ingleside
Farm, left on Ingleside Farm, Autumn Woods on
the right.

④ Fairfield Forest

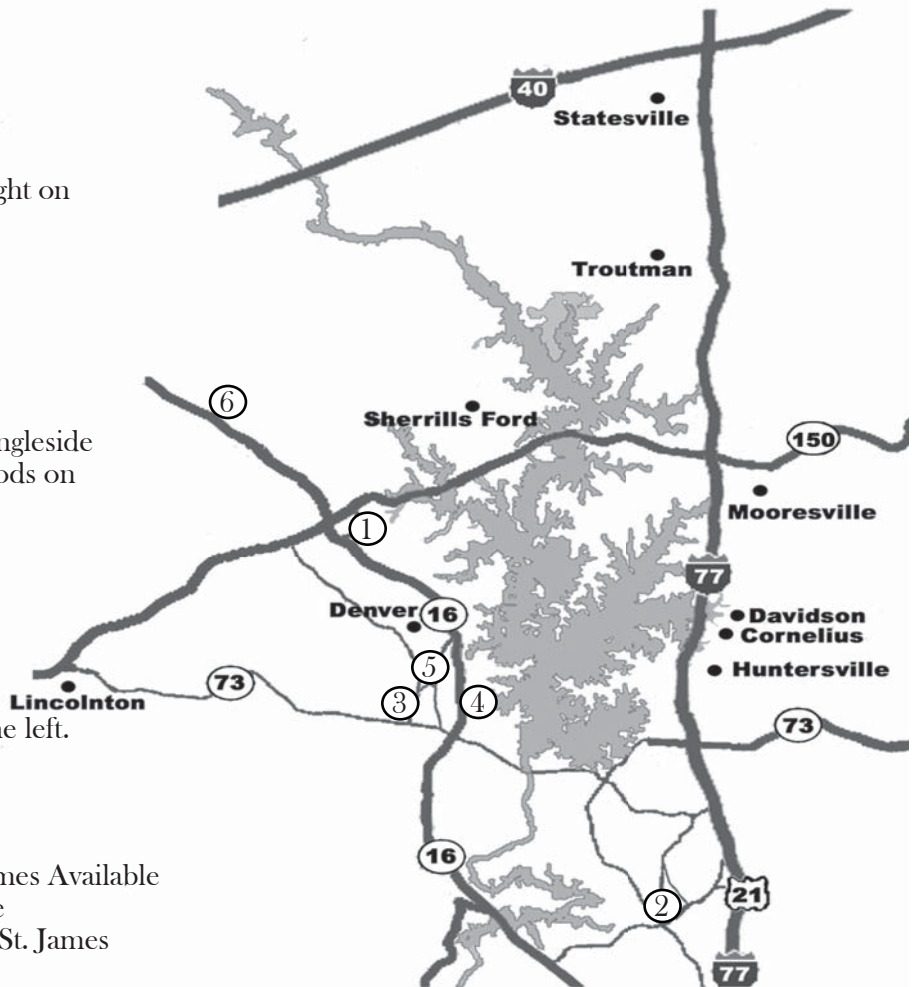
Lots from the low \$40's
From the corner of Hwy 16 & Hwy 73,
take Hwy 16 North for 3.7 miles, right on
Fairfield Forest Road, Fairfield Forest on the left.

⑤ James Plantation

Gated Entry, Lots from \$36,500 - New Homes Available
From the corner of Hwy 16 & Hwy 73, take
Hwy 16 North 7 miles into Denver, left on St. James
Church Rd, James Plantation on the right.

⑥ WynSwept

New Homes starting in the \$250's - Lots from the \$30's
I-77 Exit 36, Hwy 150 West, right on Hwy 16,
WynSwept on right. Or, from corner of Hwy 16
& Hwy 73, North on Hwy 16 for 13.5 miles,
WynSwept on right.



HECHT
Development

704-809-2500 or 704-489-1183
hechtdevelopment.com
info@hechtdevelopment.com

