

27.6 Acres



Kiser Island Road

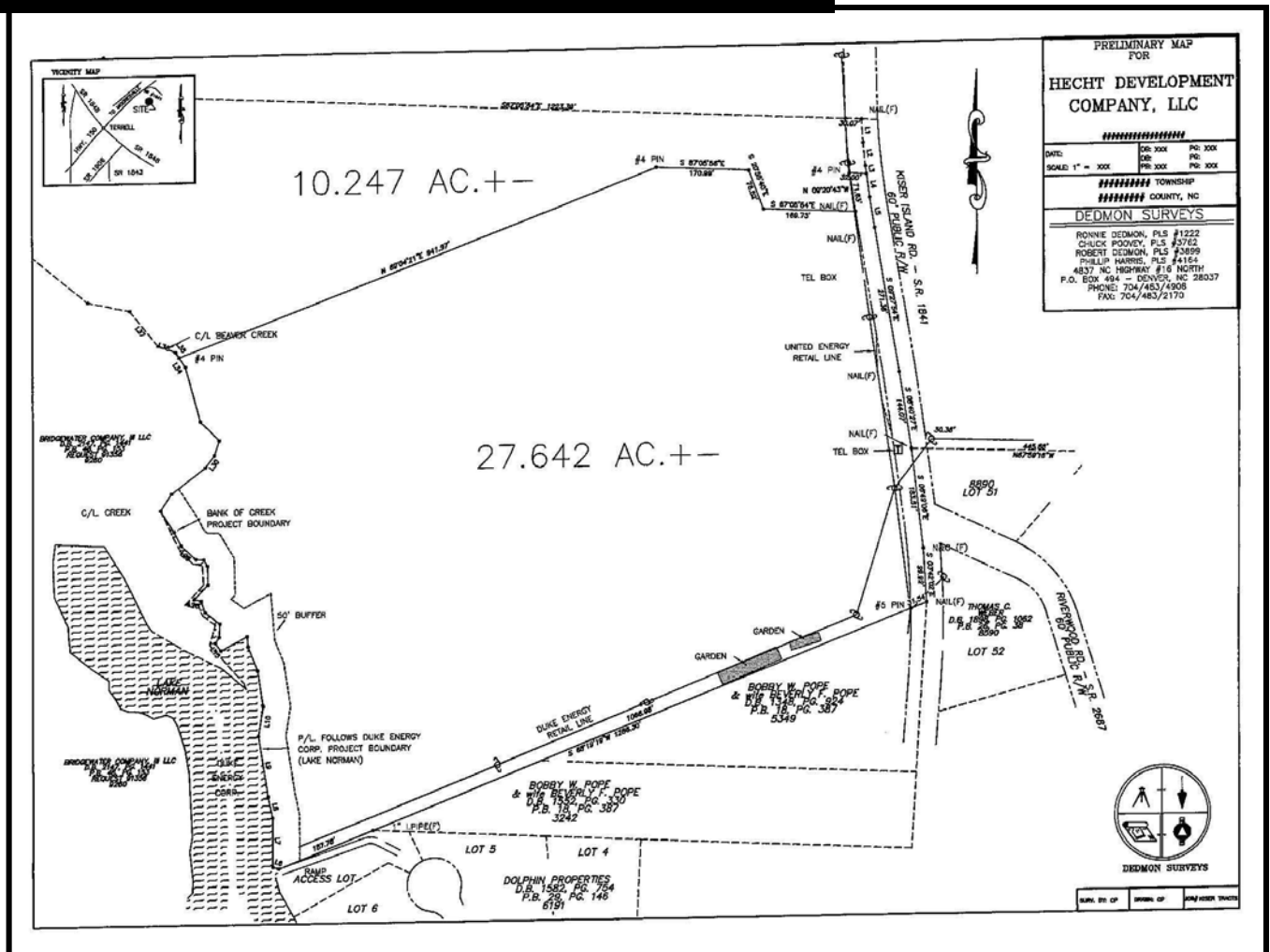
- **Catawba County**
- **Convenient to Mooresville & Denver**
- **Less than One Mile off Hwy 150**
- **Heavily Wooded**
- **Can be Subdivided into 24 Lot Community**
- **MLS # 889500**
- **\$395,000**

Call or Email for info!
704-809-2500 or 1-877-866-7626
Bob Hecht 704-634-4444
info@hechtdevelopment.com
Hechtdevelopment.com

HECHT
Development



Plat & Directions



Directions: From Exit 36 of I-77, go West on Highway 150 for approximately 6 miles, cross over Lake Norman and continue 2 miles to stoplight at Kiser Island Road. Turn left and continue less than on mile to property on right. See Sign.